

MS Series

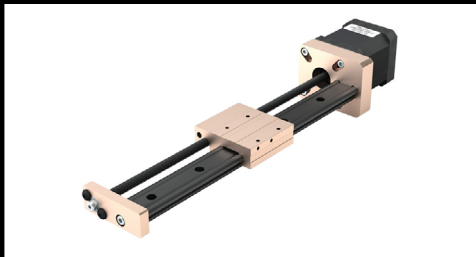
Lead Screw Linear Slides

The MS Series Linear Slides are designed to meet the needs of customers who require a compact structure. They offer many advantages such as ease of integration, small size, quiet operation, stable product quality and low cost, providing high performance in an easy to integrate linear slide.



Product Features

- Structural features of the MS Series provide a compact solution for guided linear motion
- Three motor frame size options: NEMA 11, 14, 17
- Utilizes 12mm and 15mm profile rail linear guides
- Driven by lead screws with a standard polymer nut or an anti-backlash nut
- Each size of Linear Slides has a variety of screw lead length options

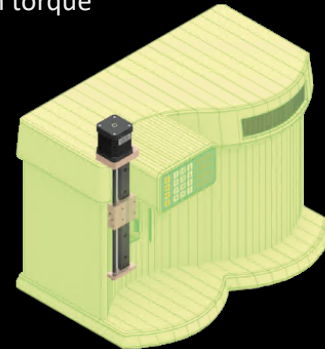


MR-MS Series Mini Rail Actuator

The Lead Screw Driven Mini-Rail with the attached motor brings another great feature forward in linear motion. Also equipped with all the great features of Mini-Rail, this low cost option is equipped with a high torque stepper motor (NEMA 17).

Product Features

- Low cost
- High torque single stack stepper motor 42mm (NEMA 17)
- Robust design - outstanding reliability
- 304 stainless steel screw with PTFE coating
- Few parts - less maintenance
- Integral screw for MR20 (coupling used for MR15)
- Ball bearing supports in the end blocks
- Preloaded Polyacetal, anti-backlash nut
- Lengths up to 640mm
- Eight (8) leads available



Medical & Laboratory Equipment Application

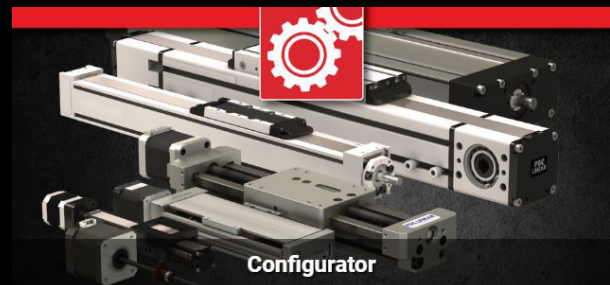
The self-lubricating Frelon® bearing materials are ideal for environments where no grease or lubrication can be present.



On Hand Lead Screws
Available to ship



>> Check out all the options in stock today.



If your specific needs require a custom solution, use PBC Linear's configurator to build a customized product to your specifications.

>> Go To [PBC Linear Custom Configurator](#)